

WWW.EXODUSDEVELOPS.COM



CONTEMPORARY  
MASTERPIECE

PRESENTED BY

SAMANTHA LAMPTEY  
BROKER OF RECORD/OWNER

5 FERNWOOD ROAD LIVINGSTON, NJ 07039

732 737 9013

EXODUS  
REAL ESTATE



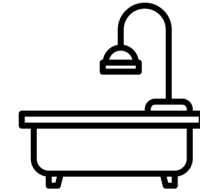


**6**



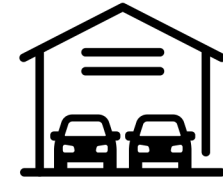
**Bed**

**5.5**



**Bath**

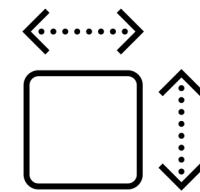
**2**



**Garage**

**3200**

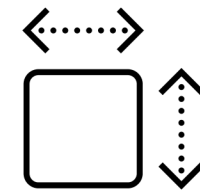
1st and 2nd level



**SF**

**1500**

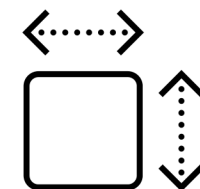
Basement



**SF**

**4700**

Total Living



**SF**



## ABOUT 5 Fernwood

**5 Fernwood is a contemporary masterpiece featuring 3,220 SF of living space and 1,500 SF of basement. Exquisitely designed with six -bedrooms, five and a half -bath this home includes two levels anchored by a striking custom staircase.**

**This smart home offers tranquility and an all-inclusive open floor plan upon a serene grand entrance leading you to soaring 30 ft high vaulted ceilings with impeccable detailed white oak wood ceiling accents and feature window. The custom chef's kitchen exudes opulence holding Miele appliances and custom Italian panel cabinetry with a tailored built island featuring a blend of white oak and quartz.**

**Additional features of the first level includes a guest en Suite, glass-enclosed wine cellar, adjacent to a formal dining area with cove lighting accentuated by white oak wood feature in ceiling .**

**The second level features 4 generous sized bedrooms, 3 full bathroom, full laundry room, tremendous closet space and access to storage attic. All bedrooms feature soaring vaulted ceilings and custom en suite bathroom with varying designs.**

**The primary suite features white oak paneled wall, vaulted ceiling with sky lights , custom built walk-in closet and an exquisite en suite bathroom with double-head walk-in rain showers, free-standing soaking tub and matte black fixtures.**

**The lower entertainment level offers a luxurious bar area, one bedroom, full bathroom and entertainment/ family room, gym/ office/ storage area.**

**The property is situated on a quarter of an acre lot and the backyard features a stoned patio and two tier . Surrounded by mature oak trees, 5 Fernwood is an oasis giving the home the utmost seclusion.**

**Livingston is a highly desired community with top notch schools and close proximity to NYC.**

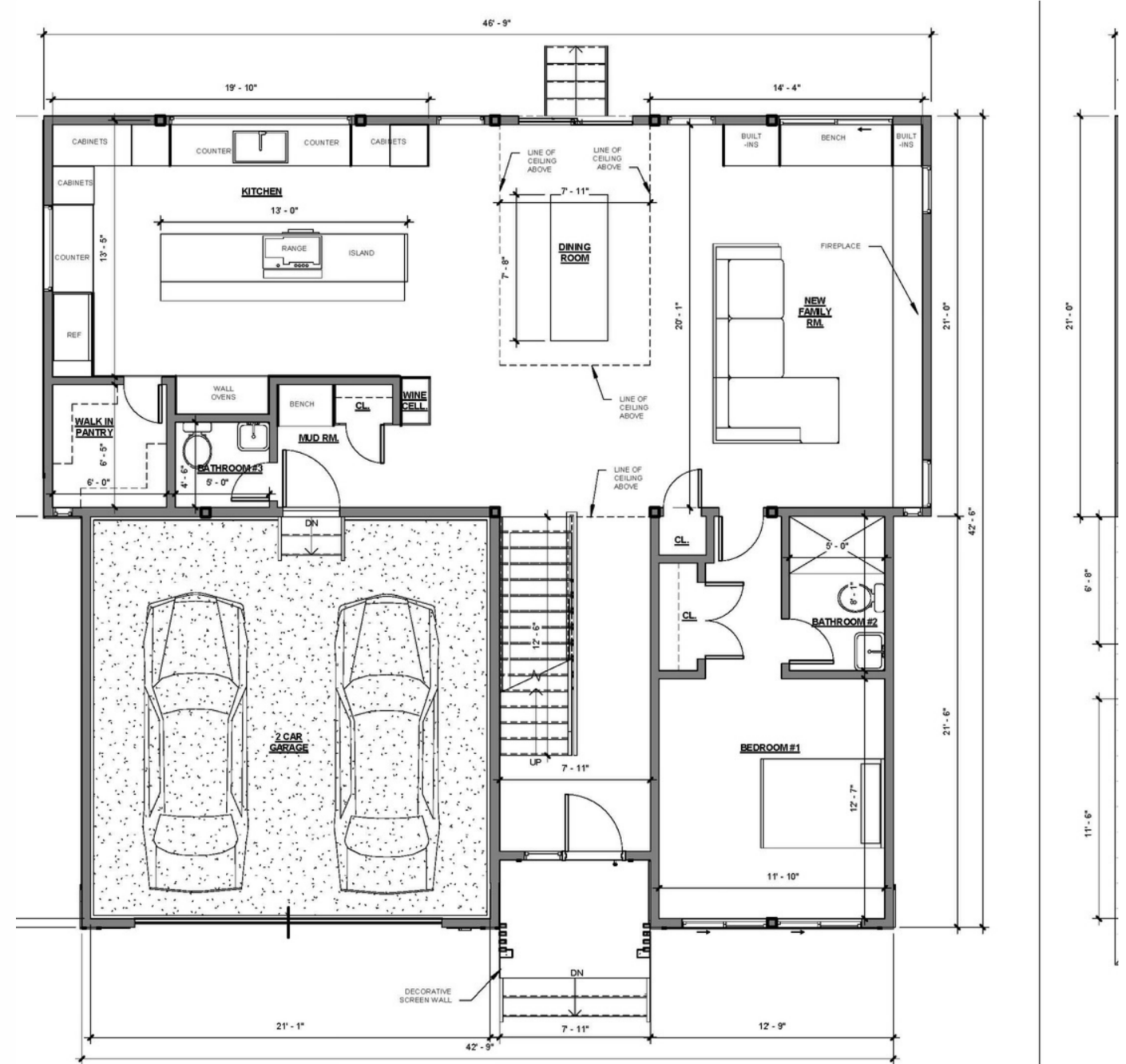




# AERIAL VIEW



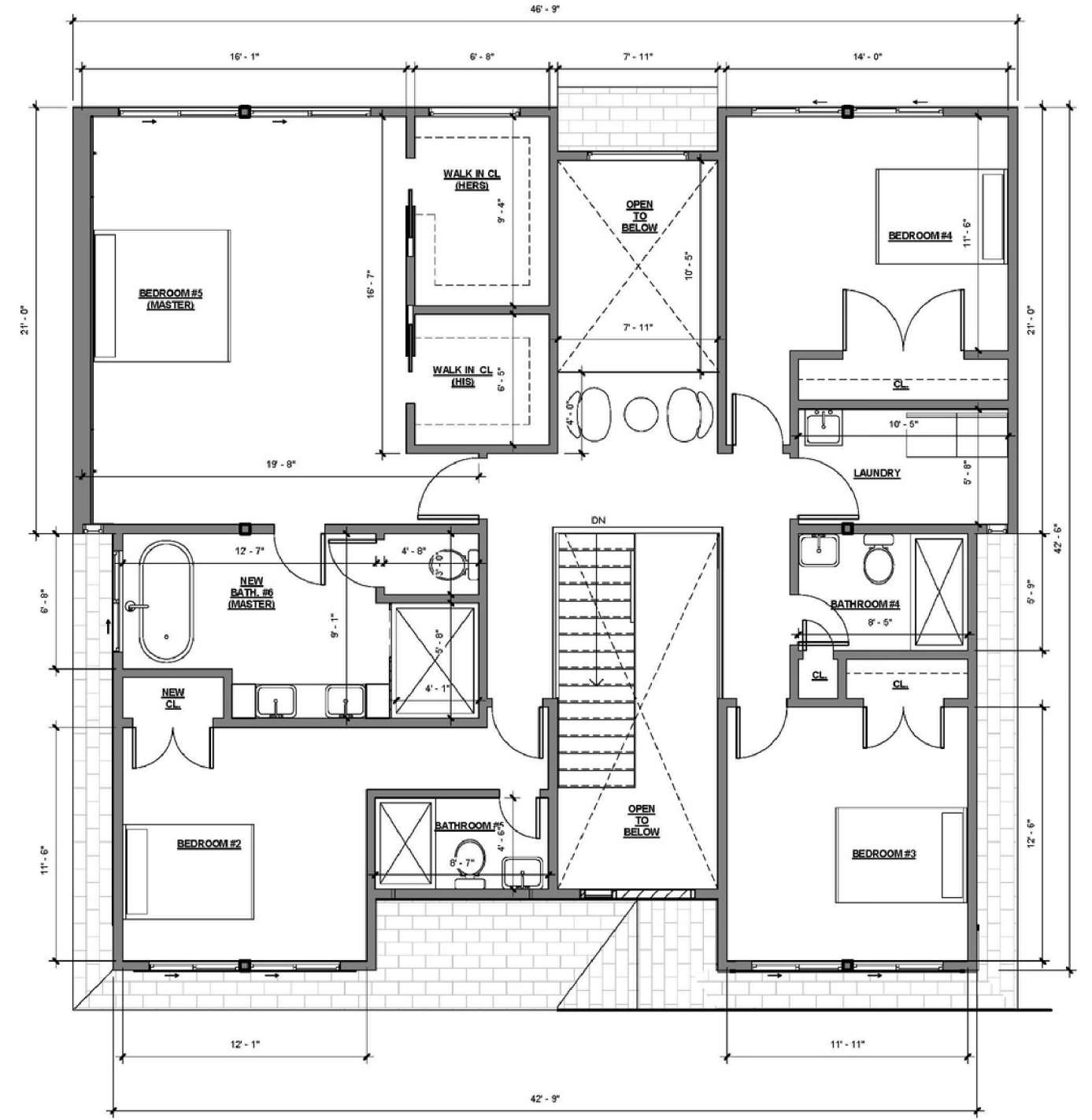
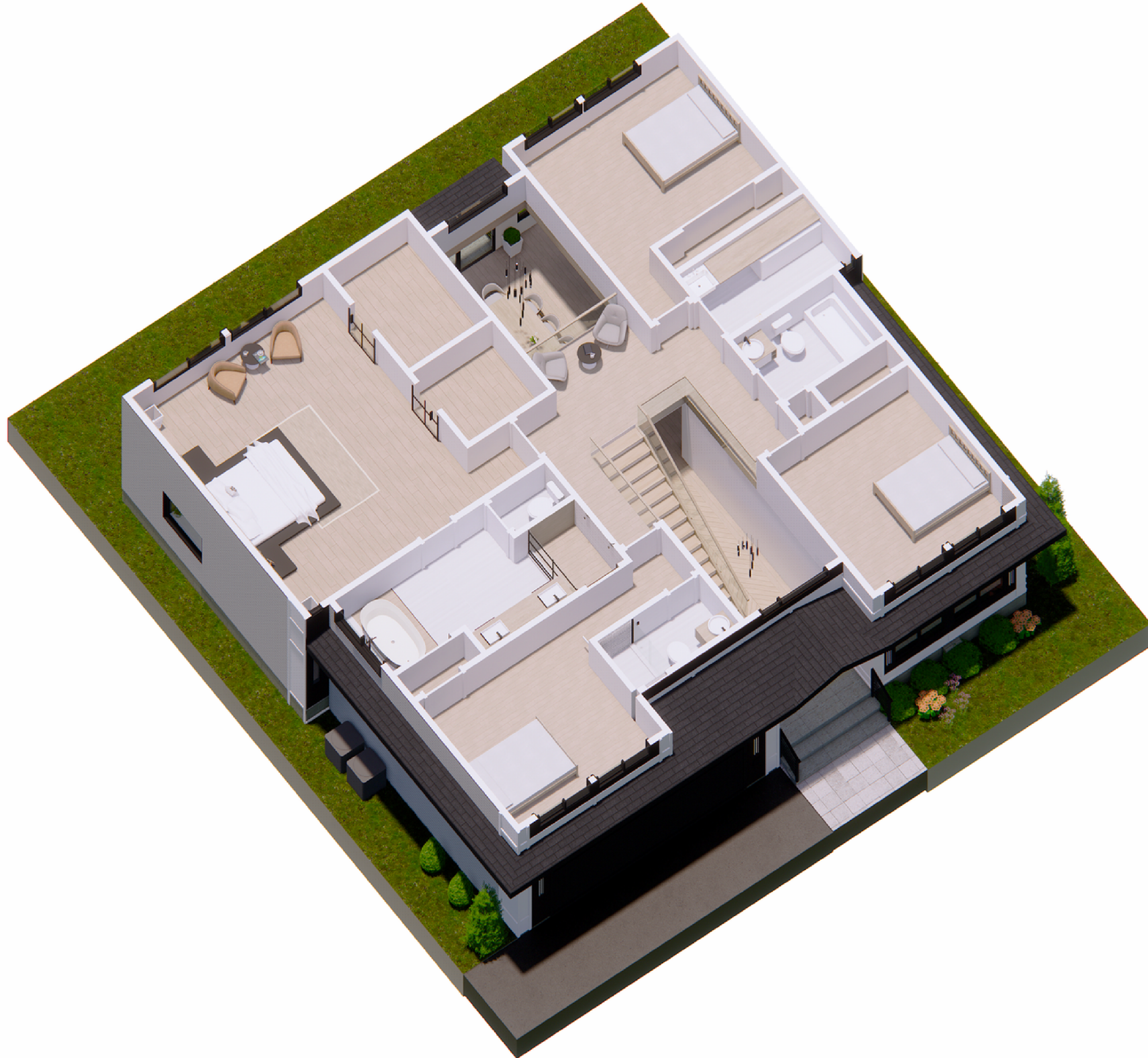
# 1ST LEVEL FLOORPLAN



5 1ST FLOOR PROPOSED FLOOR PLAN  
3/16" = 1'-0"



# 2ND LEVEL FLOORPLAN



⑥ 2ND FLOOR PROPOSED PLAN  
3/16" = 1'-0"



# FOYER AND BALCONY



Chevron wood flooring in foyer

25 Ft high vaulted ceiling

Glass balcony and railing

15 Ft high contemporary chandeliers

4 Sky lights





# LIVING ROOM

Accent lighting

Remote controlled gas fire place

Custom cabinetry





# DINING AREA

wine cellar

soaring 15 Ft vaulted ceiling

custom chandeliers  
1 (13 -15 Ft) 1 (10 -12 Ft)

**OPEN CONCEPT**





# DINING AREA

white oak ceilings accents panels  
with custom lights

glass patio sliding door

view of 2nd floor balcony







# KITCHEN AREA

**CUSTOM BUILT**





# KITCHEN AREA

Miele MasterCool 36 in. 19.6 cu ft.  
Built in Smart Counter Depth  
Bottom Freezer refrigerator with  
Ice Maker- Custom Panel Ready

Zephyr 22' 110 CFM Dual Internal  
Blower for Range Hoods

Miele 37 in Natural Gas Cooktop  
with 5 Sealed Burners

Miele Pureline Series 24' 2.9 Cu Ft.  
Electric Wall Oven with Standard  
Convection & Self Clean-Clean  
Touch Steel





# KITCHEN AREA

13 Ft custom island

Custom paneled wall panels

Custom cabinetry

6x6.5 ft walk in pantry

Custom appliance garage with  
microwave

(2) Fixed windows above sink and  
countertop





# PRIMARY BEDROOM

3 sky lights

15 ft vaulted ceiling

white oak paneled walls





# PRIMARY BEDROOM

custom pella windows

accent light

white oak hardwood floors

double primary closet





# PRIMARY BATH

Custom vanity

Freestanding tub

Glass enclosed shower with  
double rain shower heads





# PRIMARY BATH

Smart mirror

Custom wood accent wall  
and shelving



## SITE WORK DETAILS

(2) French Drain  
Sump Pump  
Belgium Block  
Asphalt driveway

## LANDSCAPE DETAILS

Aluminum Fence  
Tress  
Pavers Patio

## INTERIOR DETAILS

9 Ft Ceiling Height  
Foyer and Dining Area 25 Ft Ceiling Height  
(2) Skylights in Dining Area  
(2) Skylights in Foyer  
(2) 15 Ft high Contemporary Chandelier  
Remote Controlled Gas Fireplace with  
custom tile and wood panel

## EXTERIOR DETAILS

PVC, Wood Paneling and Vinyl  
Metal and Glass Door  
Asphalt Shingle Roof  
Black sofit

Pella Windows  
Strip Light Fixture  
2 car garage (1) 16x8 Ft sized  
garage door

## UTILITY DETAILS

(2) Zone HVAC - Smart Nest Thermostat  
New Water Line  
New Sewer Line

3,200 SF first and second floor  
1,500 SF basement  
6 Bedrooms  
5.5 Bathrooms  
Smart washer and dryer (gas)  
Custom kitchen with Miele panel appliances  
5 inch white oak hardwood floors





## STAIRS

Custom stairs

Glass railing

## SMART SYSTEM

Smart Nest thermostat

Smart interior and exterior lighting

Smart garage door

RING door bell



**EXODUS**  
REAL ESTATE

## **SAMANTHA LAMPTEY**

**B R O K E R / O W N E R**

**Office: 732 737 9013**

**Mobile: 404 903 3773**

**Email: [lamptey@exodus-re.com](mailto:lamptey@exodus-re.com)**

**Address: 1200 Morris Turnpike Short Hills NJ 07078**

**Website: [www.exodus-re.com](http://www.exodus-re.com)**

